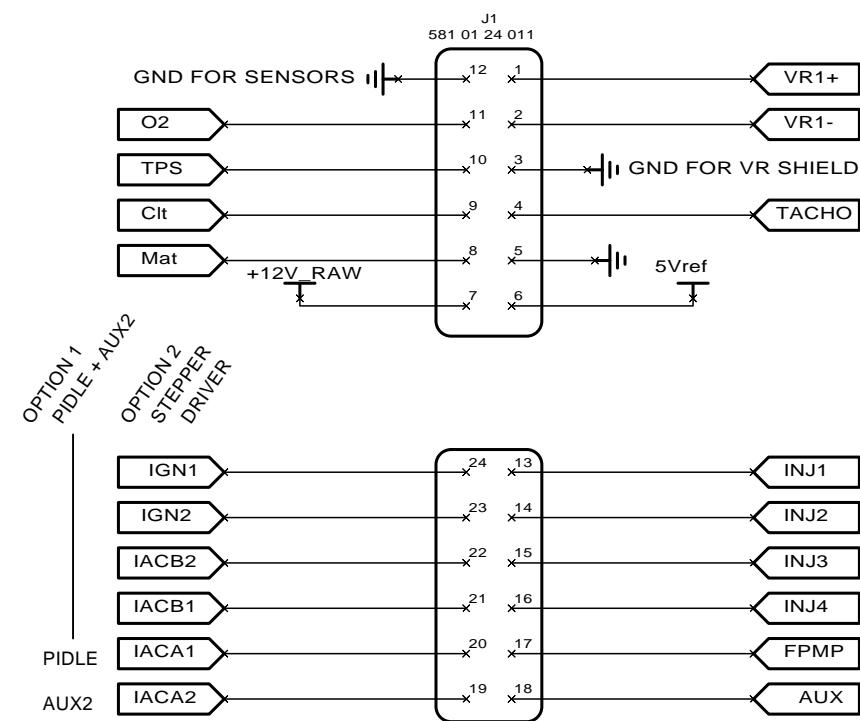
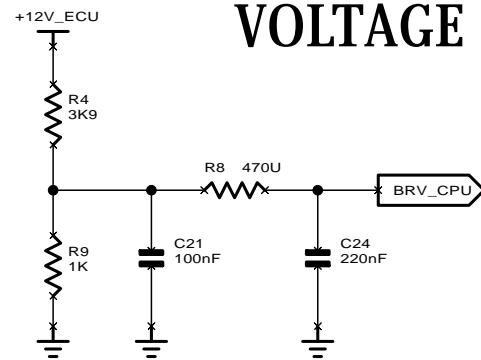


I/O MAIN CONNECTORs

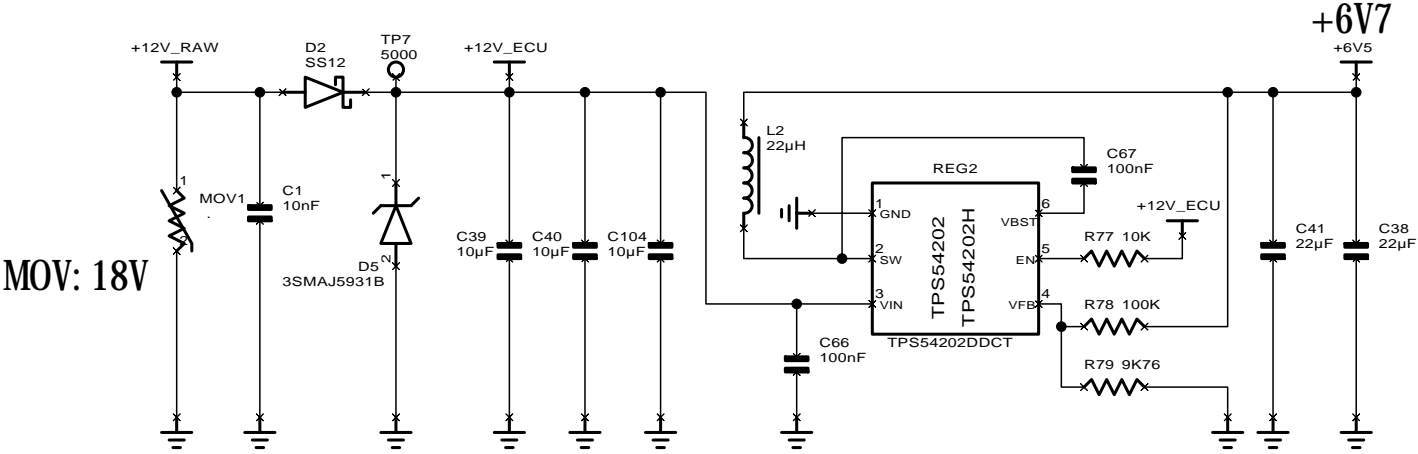


BATTERY REFERENCE VOLTAGE



POWER SUPPLY UNIT

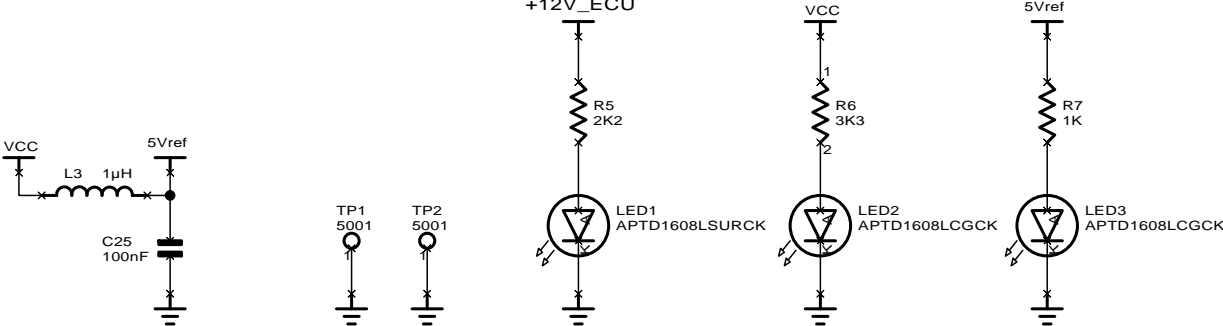
BUCK STEP DOWN VBAT -> 6.5V



(4V5 to 28V input, 2A max. Iout)

TPs

PSU LEDs



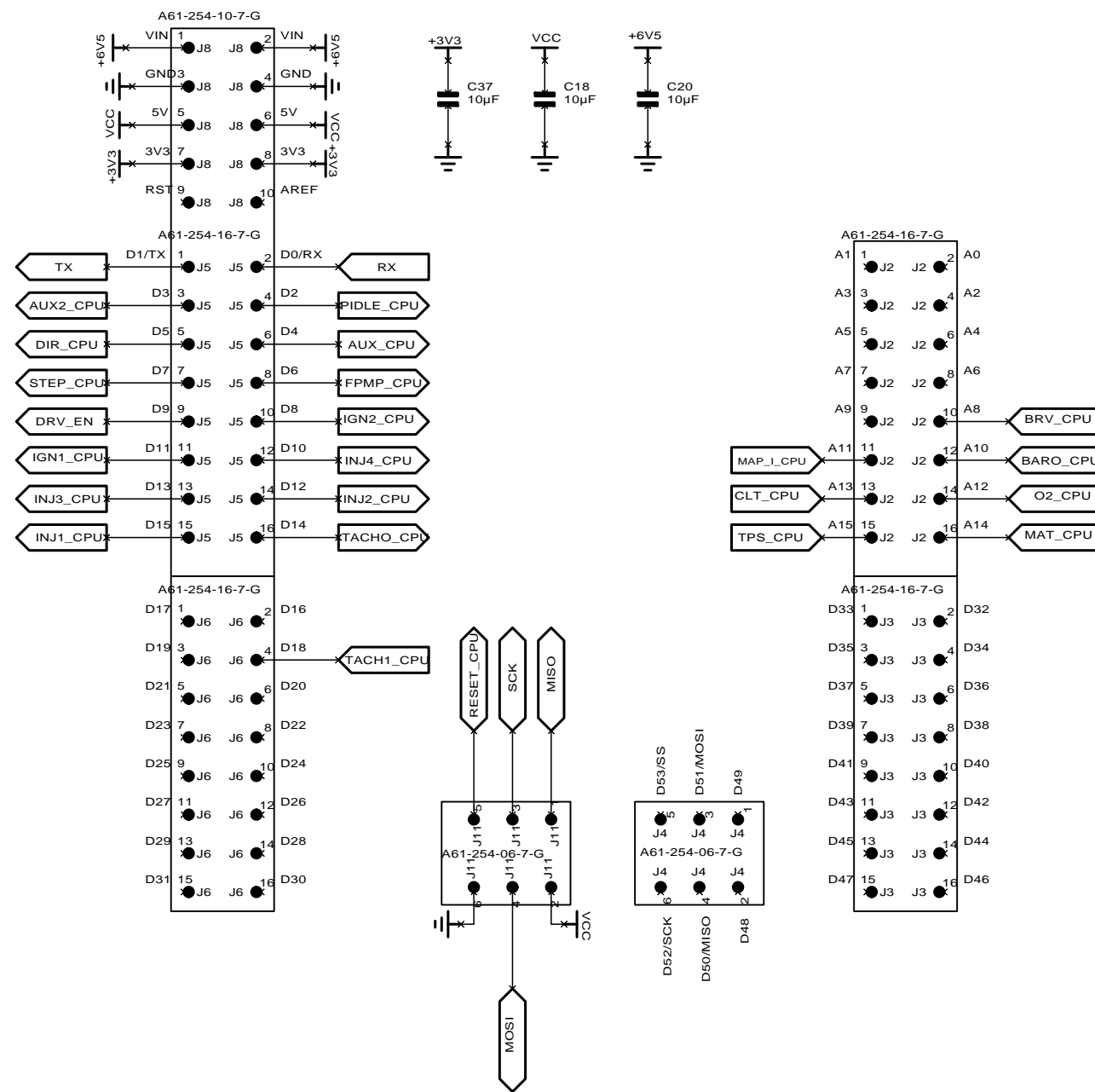
CONNECTOR/PSU

AT4206  
SPEEDUINO ECU

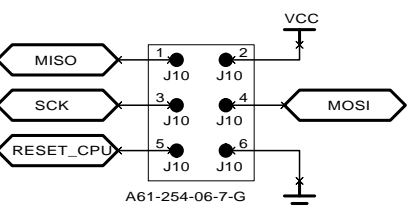
2009-063  
Rev 1.0

DESIGNER : FRAM  
DATE : 05/10/2020

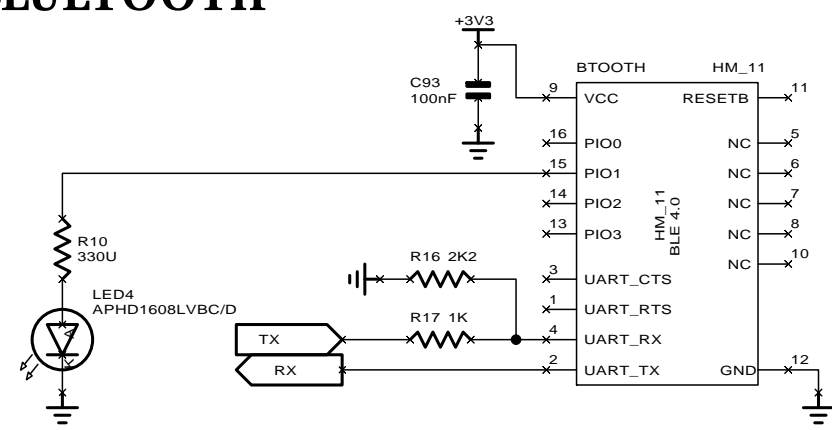
# MEGA PRO 2560 - DAUGHTER CARD



## ISP



## BLUETOOTH



CPU

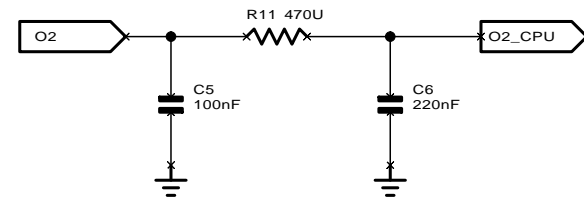
AT4206  
SPEEDUINO ECU

2009-063  
Rev 1.0

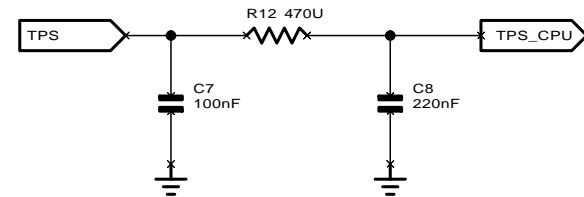
DESIGNER : FRAM  
DATE : 05/10/2020

PAGE  
2/4

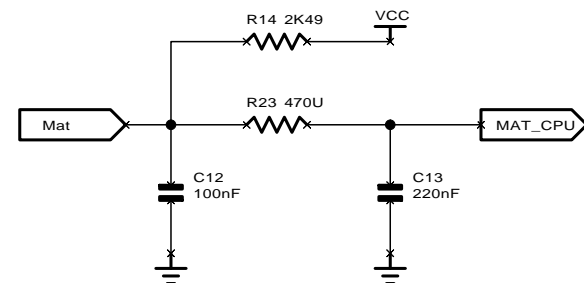
## O2 SENSOR



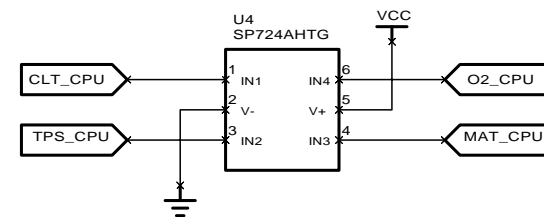
## TPS SENSOR



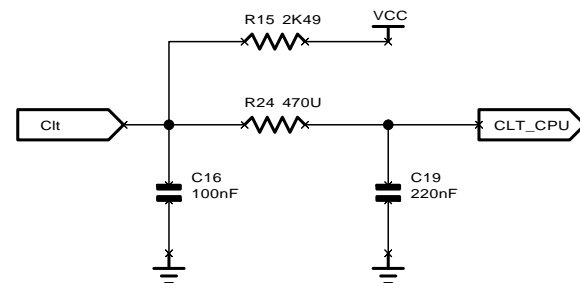
## MAT SENSOR



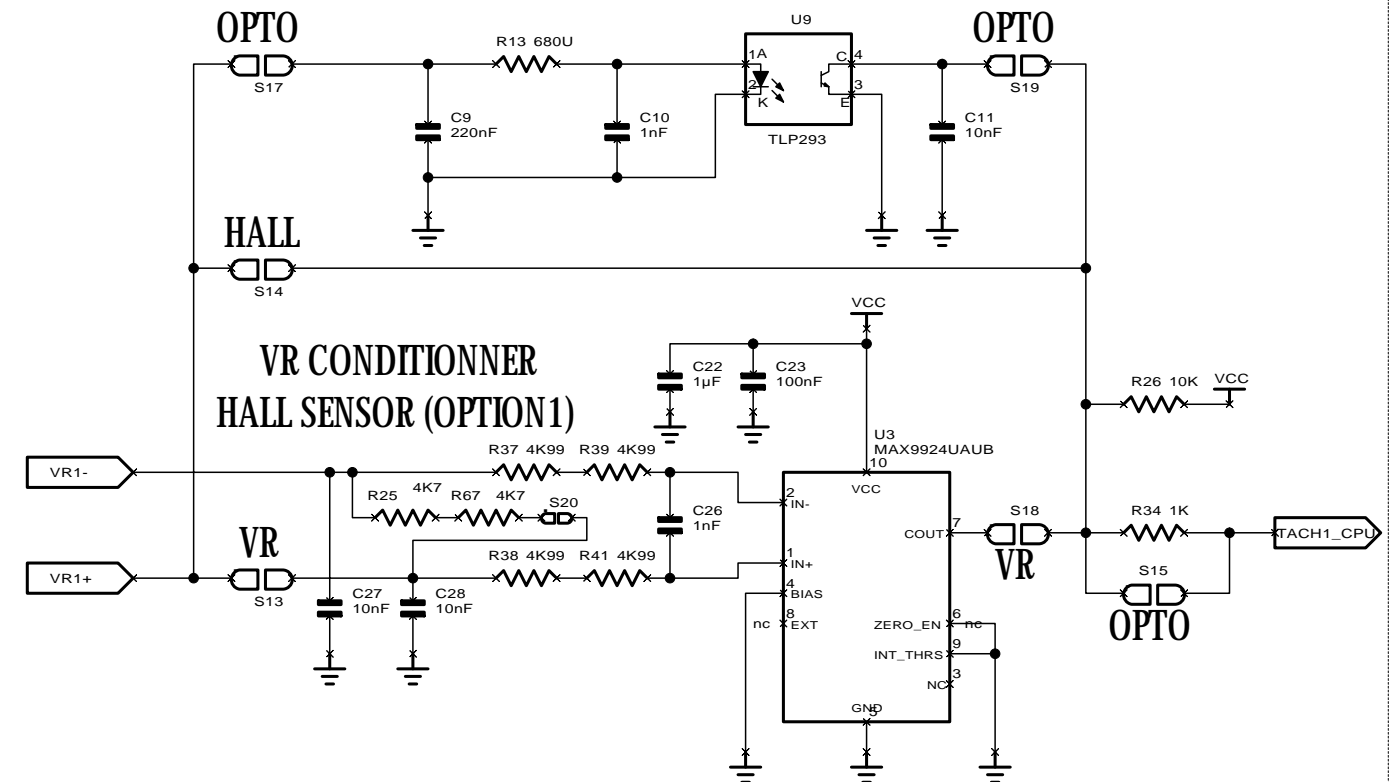
## ESD PROTECTION for SENSORS



## CLT SENSOR

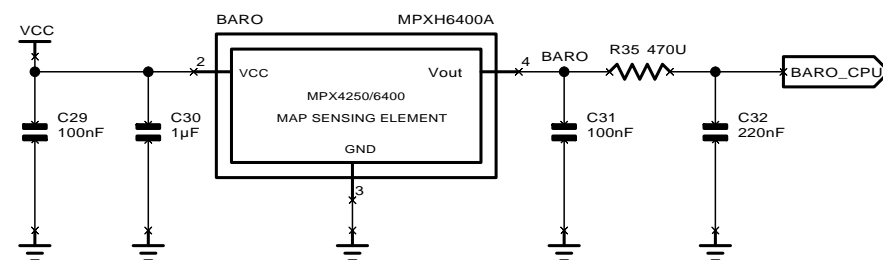


## OPTO INPUT (OPTION2)

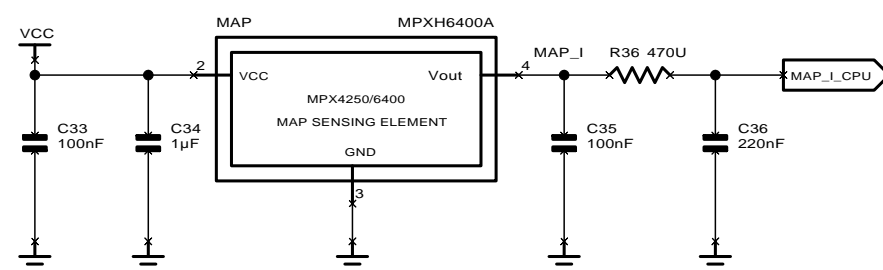


## VR CONDITIONNER HALL SENSOR (OPTION1)

## BARO SENSOR



## INTERNAL MAP SENSOR



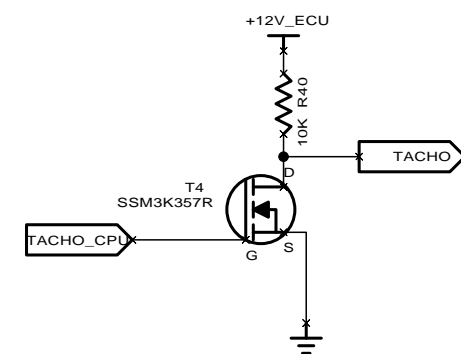
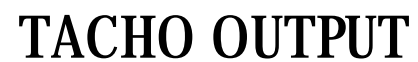
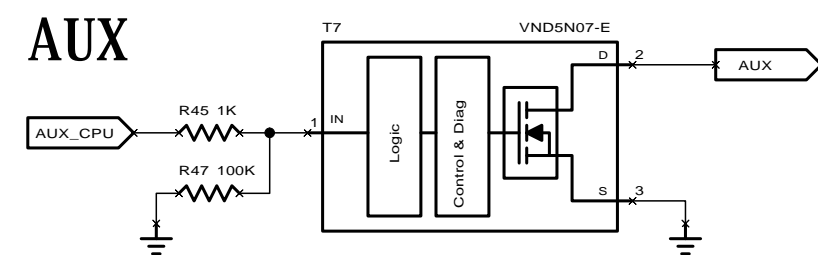
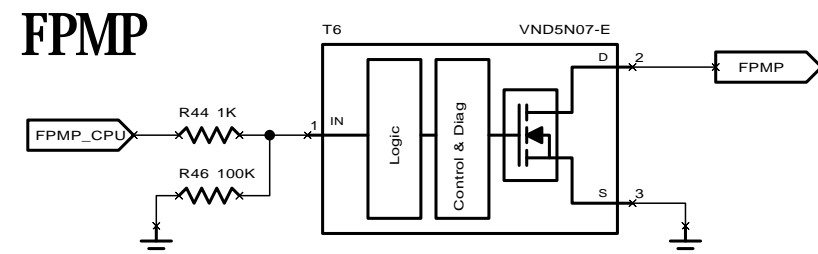
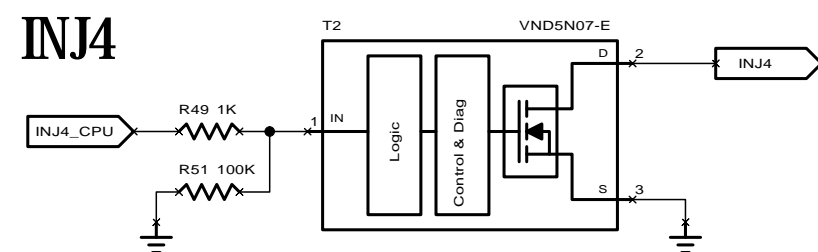
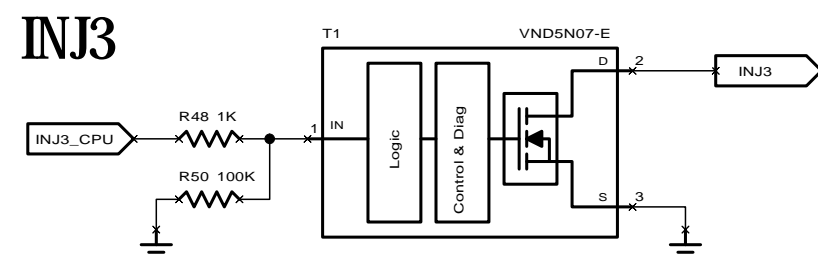
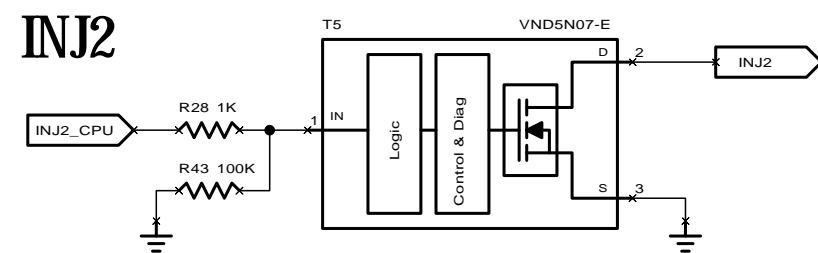
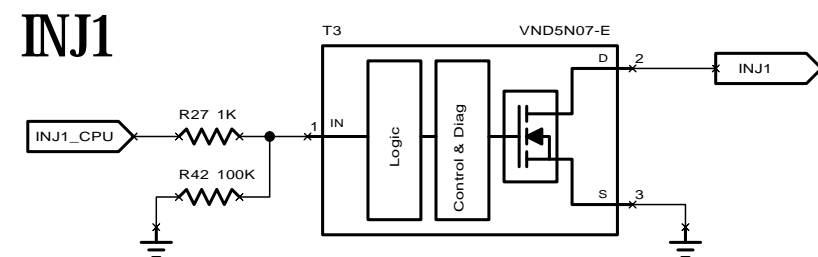
## ANALOG INPUTS/SENSORS

AT4206  
SPEEDUINO ECU

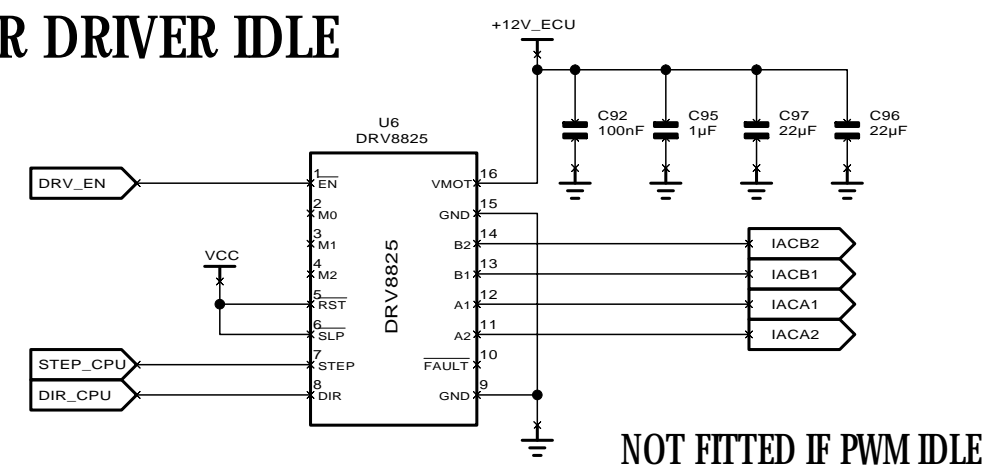
2009-063  
Rev 1.0

DESIGNER : FRAM  
DATE : 05/10/2020

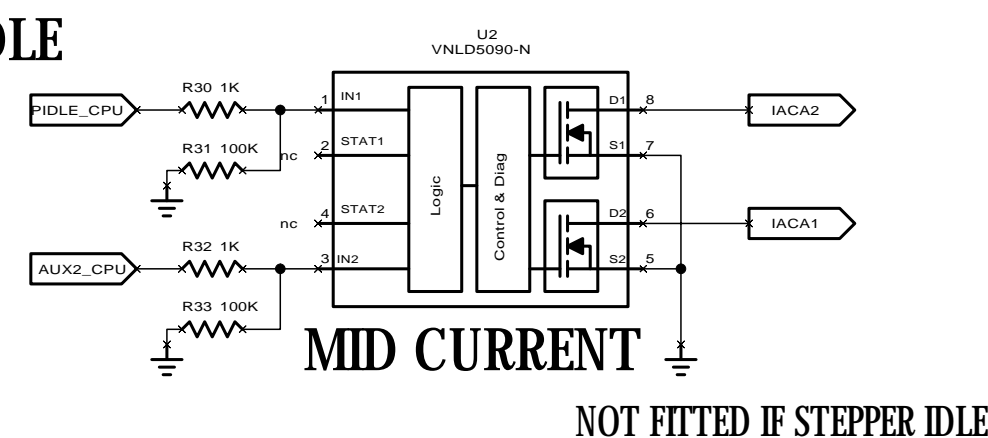
PAGE  
3/4



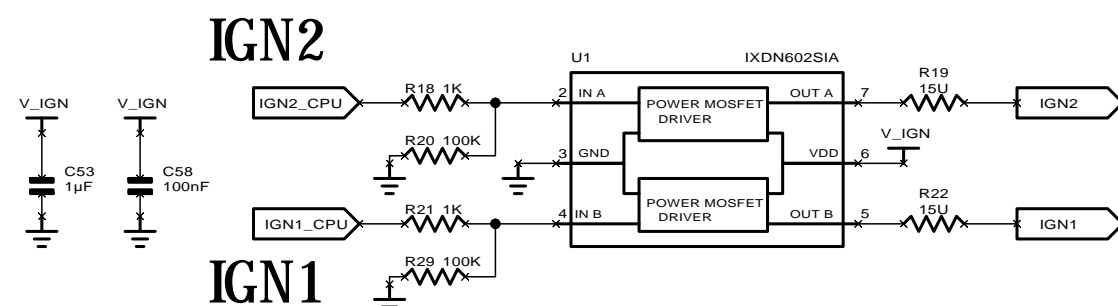
## STEPPER DRIVER IDLE



## PWM IDLE

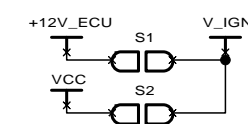


## IGNITION 1&2



## IGNITION DRIVER

### POWER SUPPLY SELECTION



INJ/IGN/STEPPER									
				REV0	ORG-EDT				
				REV	MODIF	DESS	DATE	CONTR	DATE
AT4206 SPEEDUINO ECU		2009-063 Rev 1.0			DESIGNER : FRAM DATE : 05/10/2020				
					PAGE 4/4				